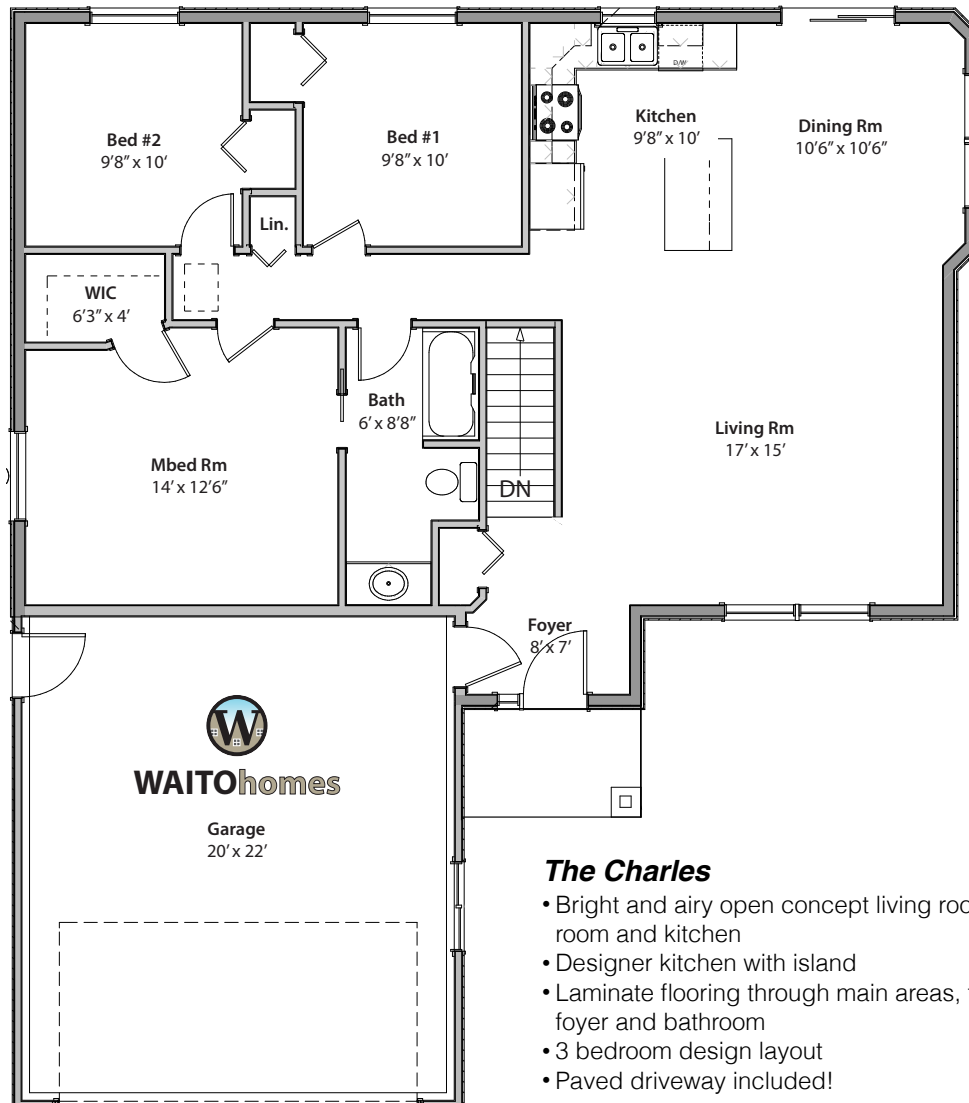
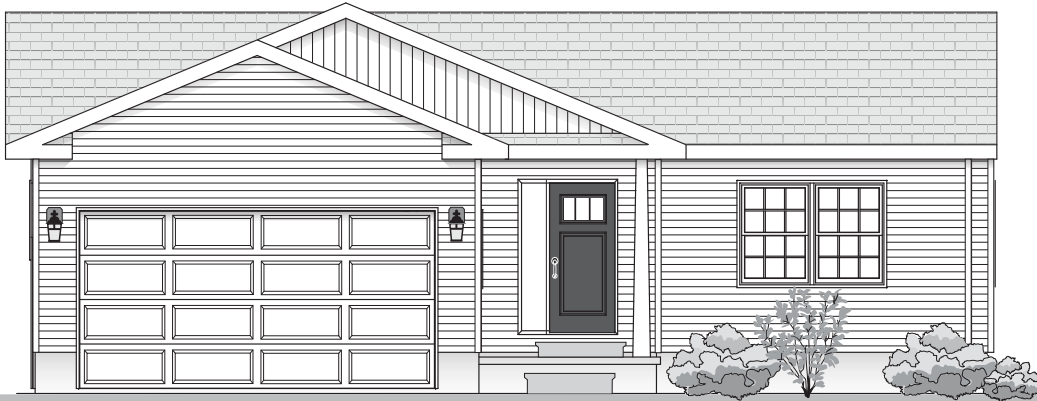




# PORTAGE LANDING

By: Terry Waito Homes Inc.

**"The Charles"**  
3 Bedroom Bungalow  
Dbl Car Garage  
**1176sqft**



### ***The Charles***

- Bright and airy open concept living room, dining room and kitchen
- Designer kitchen with island
- Laminate flooring through main areas, tile in the foyer and bathroom
- 3 bedroom design layout
- Paved driveway included!

### Value added features found within every Waito Home!

- Lifetime architectural designer shingles
- Superior grade, factory coloured fiberglass front entry door
- Double Hung, Double Tilt LowE Argon windows with Lifetime Warranty on frames installed using a Blueskin membrane
- R50 insulation in attic above home, main walls to include R20 bat insulation + R5 continuous insulation sheeting and R12 bat insulation + R5 continuous sheeting along basement walls
- 96% 2 stage ENERGY STAR QUALIFIED high efficiency gas furnace with a 10yr parts warranty
- Choice of interior latex Benjamin Moore paint colors(1 for trim and 2 for walls) Flat white ceilings throughout home
- AC4 residential/Light commercial grade wear resistant laminate flooring with a 25 year warranty
- Porcelain tiles in foyer and bathroom
- Designer kitchen cabinets and hardware in an assortment of styles and colors
- Moen Taps throughout
- Water line ran to refrigerator for ice maker and water dispenser
- 2 Exterior frost free cold water taps
- Plumbing rough-in for basement bathroom finishing
- Optional steel beam as per plan to simplify future basement development, creating a large open space
- Paved driveway INCLUDED!
- 200 Amp Service
- Plus much more
- **MANY OPTIONS FOR UPGRADES AVAILABLE**

*All selections to be made from builder samples.*

